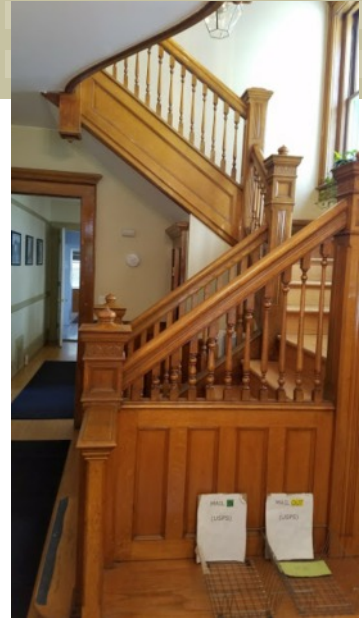


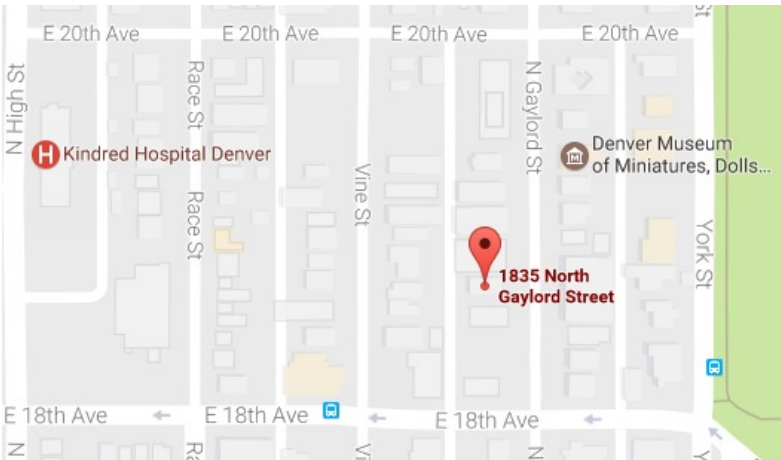
OFFICE SUITES AVAILABLE FOR LEASE AT

1835 Gaylord St.



1835 Gaylord St.
Denver, 80206

4,011 RSF
AVAILABLE



BUILDING FEATURES INCLUDE:

- This property is well maintained and professionally managed
- Divisible to 1450 RSF
- Located at E. 18th Avenue and N. Gaylord St. In Denver. 1 block from City Park
- Off-street parking for 6 cars, detached garage for storage or 2 vehicles and a private yard
- Downtown Denver and Cherry Creek are approximately a 10 minute drive away



The Summit Group, Inc.

303.991.1952

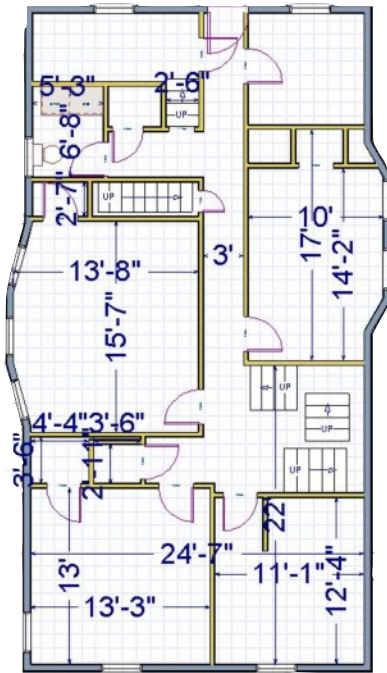
FOR MORE INFORMATION, CONTACT:

Greg Johnson 303.991.1952
gjohnson@wheelhousecommercial.com

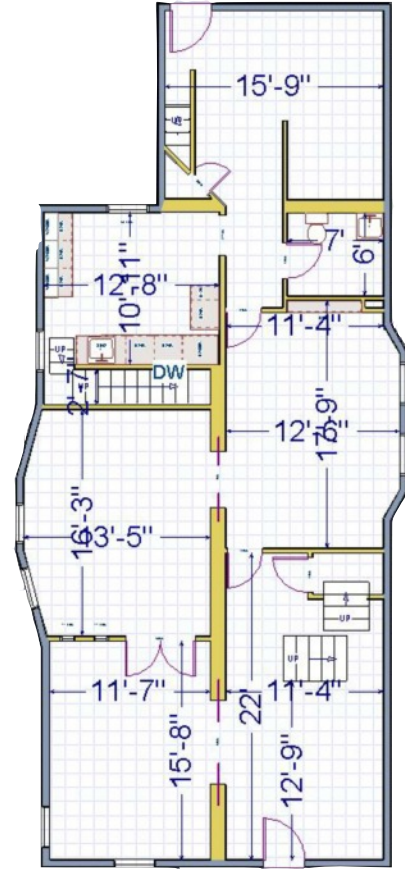
OFFICE SUITES AVAILABLE FOR LEASE AT

1835 Gaylord St.

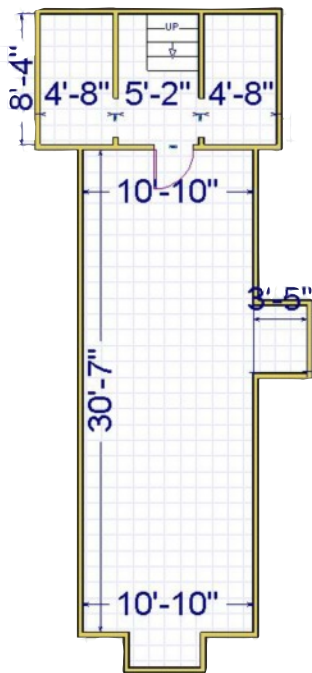
Denver, 80206



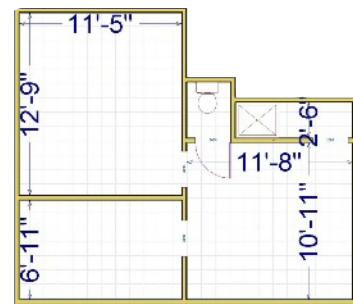
2nd Floor



1st Floor



3rd Floor



Basement



The Summit Group, Inc.

FOR MORE INFORMATION, CONTACT:

Greg Johnson 303.991.1952

gjohnson@wheelhousecommercial.com