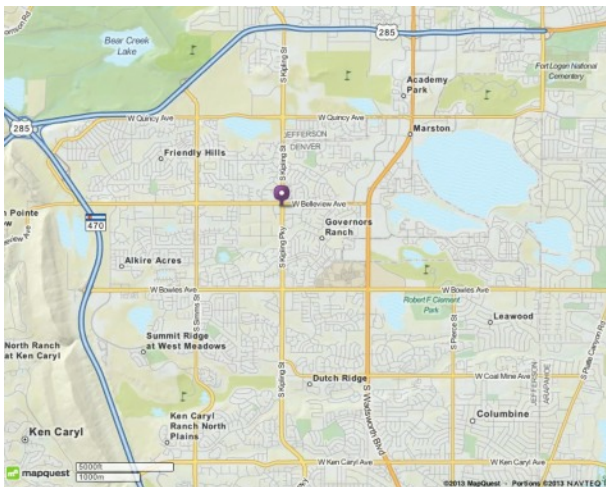


OFFICE SUITES AVAILABLE FOR LEASE AT

# FIRST BANK SOUTH JEFFCO BRANCH



**5125 S. Kipling St., Littleton  
80127**



**857 RSF Available  
\$17.00/RSF/Year**

**WESTSIDE IDENTITY FOR PUBLIC ORIENTED  
TENANTS (I.E. CPA, ATTORNEY, REAL ESTATE,  
OR INSURANCE AGENT)**

**BUILDING FEATURES INCLUDE:**

- High speed Comcast broadband
- Ample parking
- Walk to restaurants and services
- Located at Kipling and Bellevue



**The Summit Group, Inc.**

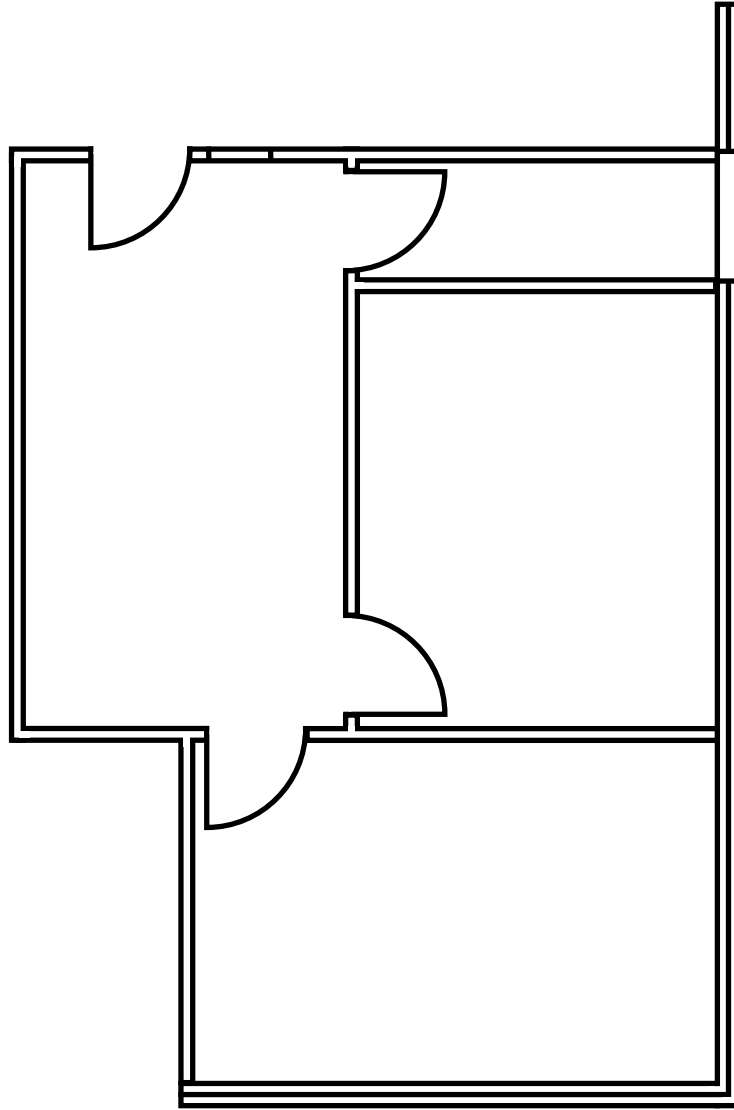
**303.991.1952**

**FOR MORE INFORMATION, CONTACT:**

**Greg Johnson 303.991.1952  
gjohnson@summitgroupdenver.com**

OFFICE SUITES AVAILABLE FOR LEASE AT

# FIRST BANK SOUTH JEFFCO BRANCH



Suite 300  
857 RSF



The Summit Group, Inc.

FOR MORE INFORMATION, CONTACT:

Greg Johnson 303.991.1952

[gjohnson@summitgroupdenver.com](mailto:gjohnson@summitgroupdenver.com)