

# FIRST BANK



**1,216- 8,136 RSF AVAILABLE**

## **BUILDING & LOCATION**

- High visibility bank building
- Located in the new and exciting Belmar Town Center
- Walk to restaurants + shopping
- Two building conference rooms
- Stable Ownership and Management

550 S. WADSWORTH BLVD. LAKEWOOD 880226

**GREAT ACCESS TO**  
Downtown Denver and the  
Metro Area

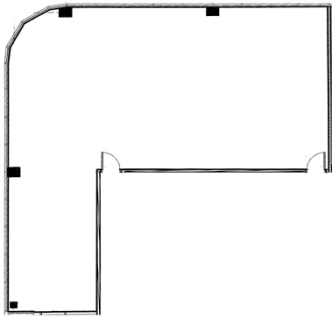


**The Summit Group, Inc.**  
Commercial Real Estate

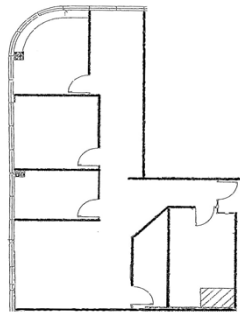
**FOR MORE INFORMATION CONTACT:**  
Ric Holderith at 303/985-8701 (Ext. 106)  
Rholderith@summitgroupdenver.com  
Or: Greg Johnson at (Ext. 109)  
Gjohnson@summitgroupdenver.com

# FIRST BANK

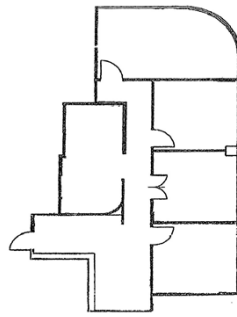
SUITES CURRENTLY AVAILABLE:



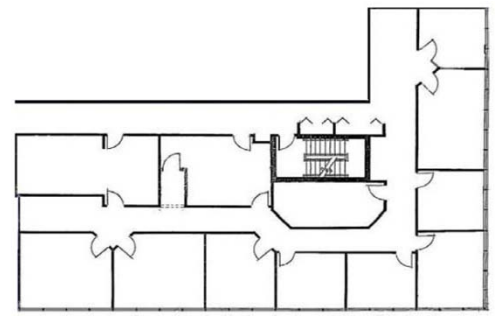
**Suite 150**  
1,427 RSF



**Suite 402**  
1,484 RSF



**Suite 301**  
1,216 RSF



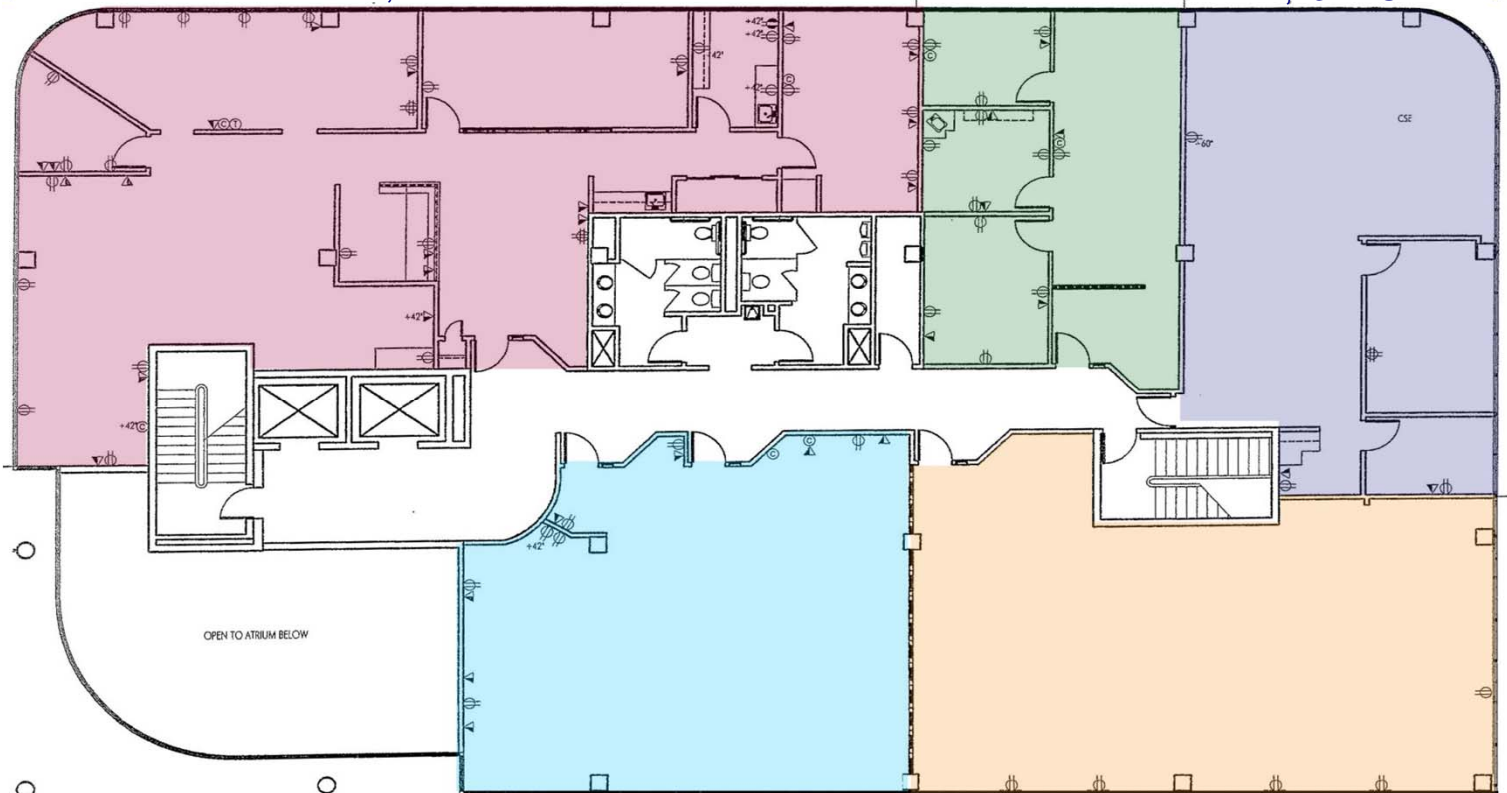
**Suite 575**  
2,684 RSF

## CUSTOM DEMISED SUITES OR FULL FLOOR 8,136 RSF AVAILABILITY

**Suite 200**  
2,693 RSF

**Suite 220**  
914RSF

**Suite 230**  
1,437 RSF



**Suite 260**  
1,418 RSF

**Suite 240**  
1,674 RSF



**The Summit Group, Inc.**  
Commercial Real Estate

**FOR MORE INFORMATION CONTACT:**  
Ric Holderith at 303/985-8701 (Ext. 106)  
Rholderith@summitgroupdenver.com  
Or: Greg Johnson at (Ext. 109)  
Gjohnson@summitgroupdenver.com