

# SHERMAN PLAZA



**976 - 10,293 RSF AVAILABLE**

## **BUILDING FEATURES INCLUDE:**

- Common conference room and lunch room
- Over-standard , secure onsite parking (1.76:1000rsf)
- Card key building access
- Close to court houses and State Capitol
- Comcast Cable

## **ACCESS VIA:**

**Lincoln/Broadway and Park Avenue. Adjacent to bus stop**

1888 SHERMAN ST, DENVER 80203



**FOR MORE INFORMATION CONTACT:**  
Ric Holderith at 303/985-8701 (Ext. 106)  
Rholderith@summitgroupdenver.com  
Or: Greg Johnson at (Ext. 109)  
Gjohnson@summitgroupdenver.com



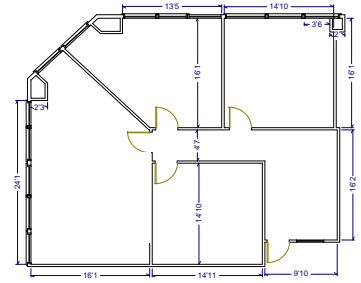
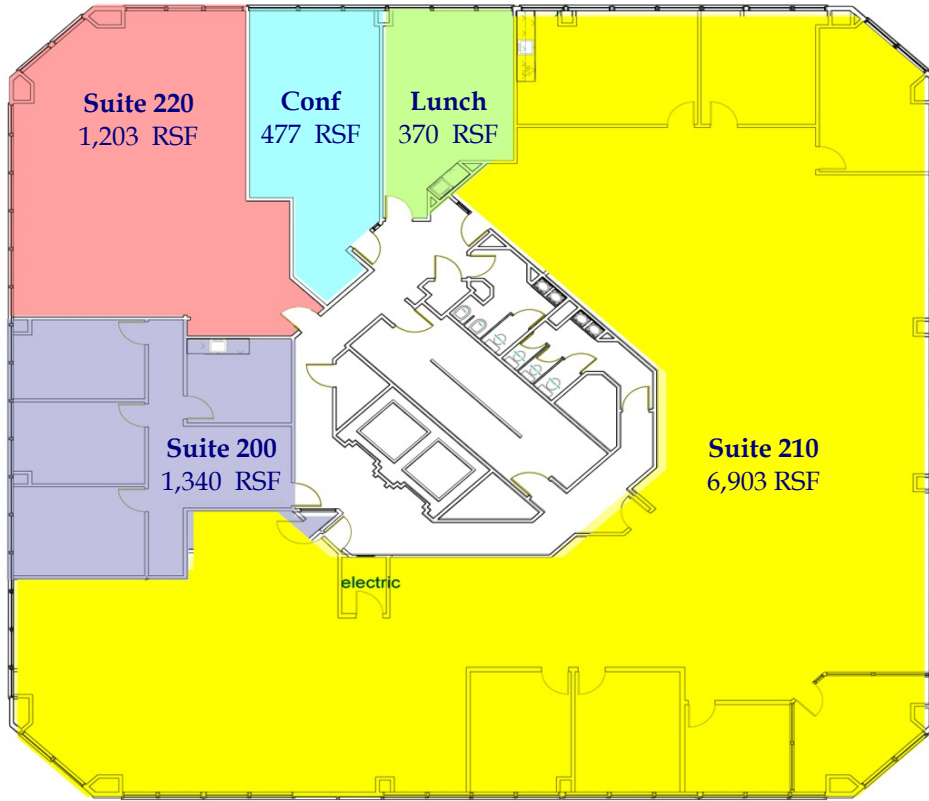
**The Summit Group, Inc.**  
Commercial Real Estate



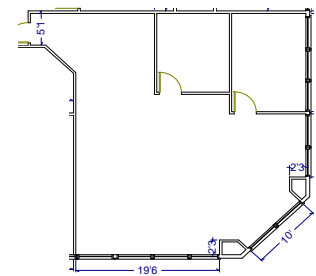
# SHERMAN PLAZA

1888 Sherman St. Denver 80203

## AVAILABLE SUITES:

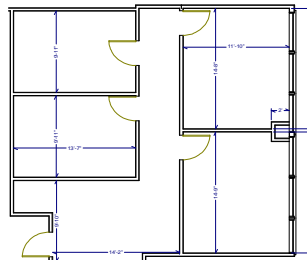


**Suite 410**  
1,641 RSF

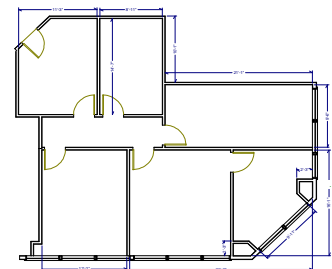


**Suite 425**  
1,313 RSF

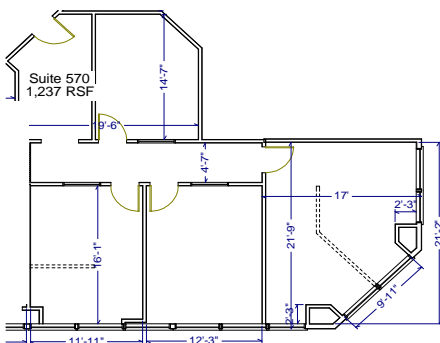
**THE ENTIRE 2nd FLOOR**  
**CAN COMBINE FOR 10,293 RSF**



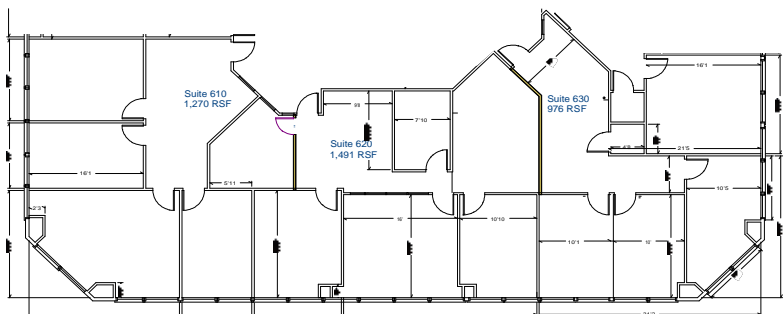
**Suite 550**  
1,004 RSF



**Suite 760**  
1,397 RSF



**Suite 570**  
1,237 RSF



**Suite 610**  
1,270 RSF

**Suite 620**  
1,491 RSF

**Suite 630**  
976 RSF

**CAN COMBINE FOR 3,737 RSF**



**The Summit Group, Inc.**  
Commercial Real Estate



**FOR MORE INFORMATION CONTACT:**  
Ric Holderith at 303/985-8701 (Ext. 106)  
Rholderith@summitgroupdenver.com  
Or: Greg Johnson at (Ext. 109)  
Gjohnson@summitgroupdenver.com